

SHURE[®]
LEGENDARY
PERFORMANCE™

WIRED MICROPHONE
MICROFLEX SERIES

MX200 SERIES USER GUIDE

Le Guide de l'Utilisateur

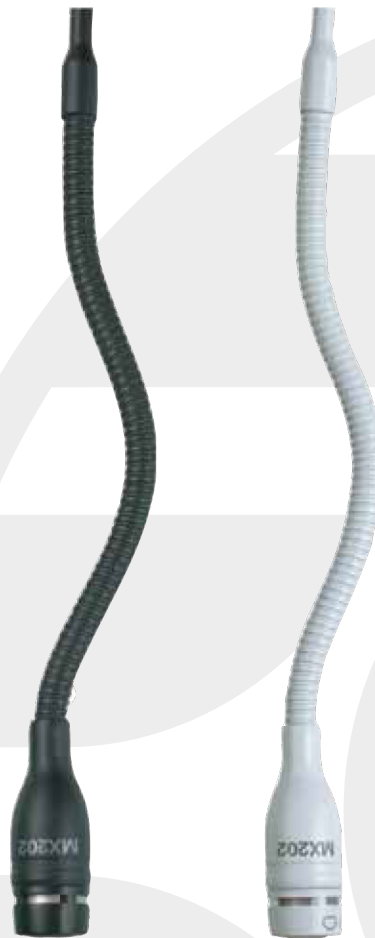
Bedienungsanleitung

Guia del Usuario

Guida dell'Utente

Manual do Usuário

取扱説明書



© 2016 Shure Incorporated
27A14046 (Rev. 6)
Printed in U.S.A.



MX200

Overhead Microphones

Shure Microflex® MX200 Series microphones are miniature electret condenser microphones designed for miking choirs and performance groups. They are typically suspended over the heads of the performers. Their high sensitivity and wide frequency range make them suitable for recording, as well as sound reinforcement applications. An attached 101 mm (4 in.) gooseneck allows them to be easily aimed at the sound source.

- Wide dynamic range and frequency response for accurate sound reproduction
- Interchangeable cartridges that provide a choice of polar pattern for each application
- White or black finish that blends unobtrusively with most surroundings
- RF filtering

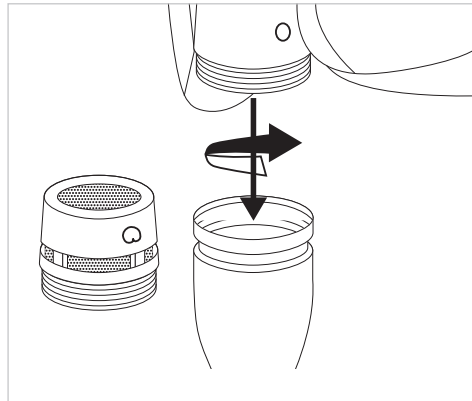
Model Variations

Microflex MX202 microphones are available in black or white with a choice of in-line preamplifier or plate-mount preamplifier.

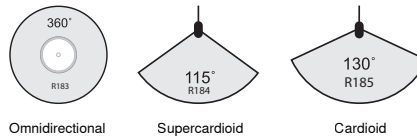
The polar pattern of the included cartridge is indicated by a model number suffix:

- /C Cardioid
- /S Supercardioid
- /N Cartridge not included

Interchangeable Cartridges



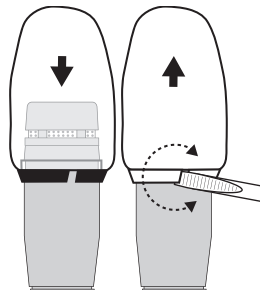
Microflex microphones use interchangeable cartridges that allow you to choose the polar pattern for different installations.



Cartridge Polar Patterns

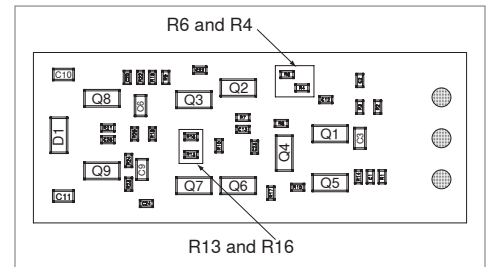
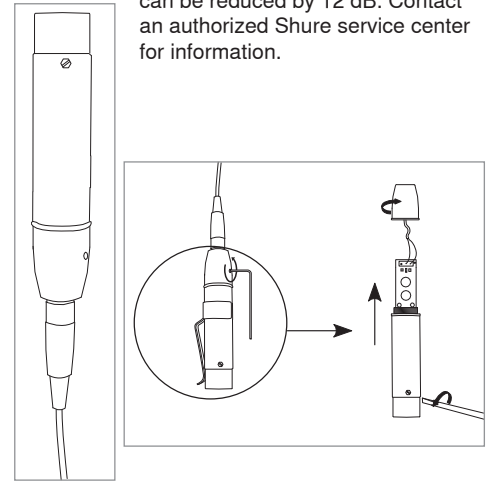
Snap-Fit Windscreen

- Snap into the groove below the cartridge.
- To remove, spread the gap with a screwdriver or thumbnail.
- Provides 30 dB of "pop" protection.



Preamp Gain

If necessary, the preamplifier gain can be reduced by 12 dB. Contact an authorized Shure service center for information.



GAIN SETTING		
	12 dB	0 dB
R6	10k	0 Ω
R4	10k	20k
R16	0 Ω	10M
R13	DNP	301 Ω

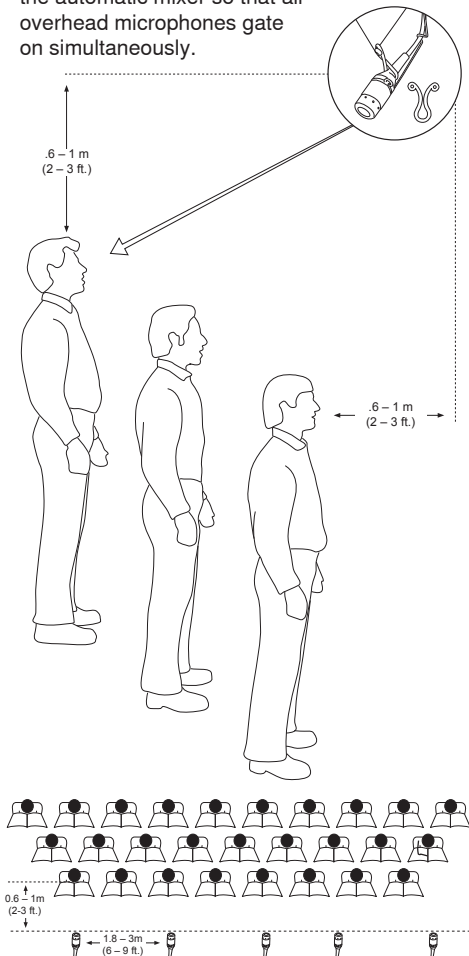
RFI Filtering

Important: Microphones must be used with the RK100PK and RK202PK plate-mounted preamp to optimize RF immunity.

Microphone Placement

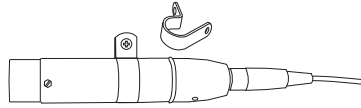
The microphone is most stable when the gooseneck is bent into a "lazy S" shape. Use the supplied hanging clip and heavy thread or monofilament fishing line to suspend the microphone at a specific location.

- For choir installations, hang a microphone 0.6 to 0.9m (2 to 3 ft.) in front of the first row, and 0.6 to 0.9m (2 to 3 ft.) over the heads of the singers in the last row. Aim the microphone at the singers in the back row.
- When miking groups that move or vary in size, use a boom stand and the supplied stand adapter.
- If four or more microphones will be open at once, an automatic mixer, such as the Shure SCM810 or SCM410, is recommended. Set up the automatic mixer so that all overhead microphones gate on simultaneously.



Permanent Installation

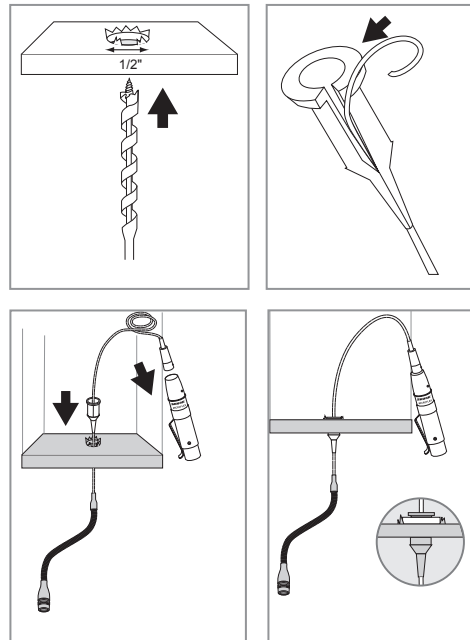
Installing the In-Line Preamp



Use the two supplied mounting clamps to hold the preamp in place on a wall or ceiling.

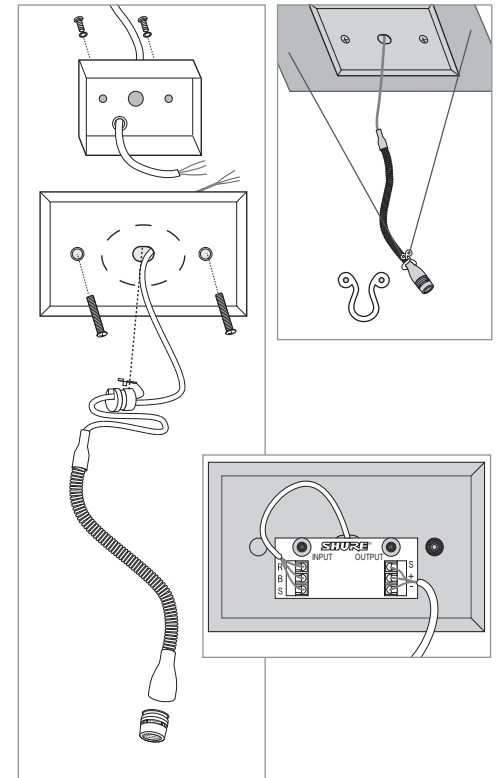
Ceiling Tile Installation

1. Drill a 1/2 in. hole into the ceiling tile.
CAUTION: To avoid tile damage, use a 1/2 in. augur bit and drill very slowly.
2. Unplug the mini 4-pin connector from the preamp and feed the cable through the hole.
3. Place the rubber grommet, tip down, over the cable and position it to suspend the microphone at the appropriate height.
4. Fit the grommet securely into the hole. For 5/8 in. ceiling tile, use the supplied washer.
5. Reconnect the preamp.



The plate-mounted preamp allows you to mount the preamp in an electrical box and use conduit to run cable through ceilings and walls.

1. Remove preamp housing by removing two philips head screws.
2. Remove knock-out from the hole in the center of the cover plate (if present).
3. Cut cable to desired hanging length, allowing for a 76 to 101 mm (3 to 4 in.) service loop.
4. Clamp strain relief around cable and insert strain relief into hole in plate.
5. Connect cable leads to input terminal block (B = Black, R = Red, S = Shield).
6. Using professional-quality, two-conductor, shielded microphone cable, thread output cable from outside of preamp through hole with black bushing.
7. Connect cable to output terminal block (Pin 2 = +, Pin 3 = -, Shield = S).
8. Reattach the preamplifier housing.



Specifications

Type

Condenser (electret bias)

Frequency Response

50–17000 Hz

Polar Pattern

MX202B/C, MX202W/C: Cardioid
MX202B/S, MX202W/S: Supercardioid

Output Impedance

EIA Rated at 150 Ω (180 Ω actual)

Output Configuration

Active balanced

Sensitivity (at 1 kHz, open circuit voltage)

Cardioid: -35 dBV/Pa (18 mV)
Supercardioid: -34 dBV/Pa (21 mV)
1 Pascal=94 dB SPL

Maximum SPL (1 kHz at 1% THD, 1 kΩ load)

Cardioid: 124 dB
Supercardioid: 123 dB

Equivalent Output Noise (A-weighted)

Cardioid: 28 dB SPL
Supercardioid: 27 dB SPL

Signal-to-Noise Ratio (referenced at 94 dB SPL at 1 kHz)

Cardioid: 66 dB
Supercardioid: 68 dB

Dynamic Range (1 kΩ load at 1 kHz)

96 dB

Common Mode Rejection (10 Hz to 100 kHz)

45 dB minimum

Preamplifier Output Clipping Level (1% THD)

-6 dBV (0.5 V)

Polarity

Positive sound pressure on diaphragm produces positive voltage on pin 2 relative to pin 3 of output XLR connector.

Cable

9 m (30 ft)

Environmental Conditions

Operating Temperature: -18–57 °C (0–135 °F)
Storage Temperature: -29–74 °C (-20–165 °F)
Relative Humidity: 0–95%

Power Requirements

11–52 Vdc phantom, 2.0 mA

Note: Yellowing of any plastic material can be caused from cigarette smoke, ultra violet rays, and other chemical interactions. Once plastic has yellowed, there typically is no cleaning method that will restore the whiteness.

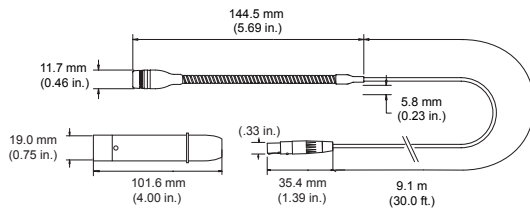
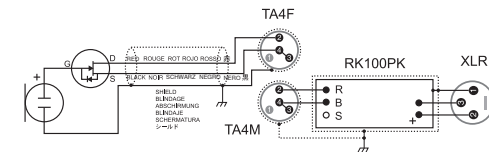
Certifications

Meets essential requirements of all applicable European Directives.

Eligible for CE marking.

The CE Declaration of Conformity can be obtained from: www.shure.com/europe/compliance

Authorized European representative:
Shure Europe GmbH
Headquarters Europe, Middle East & Africa
Department: EMEA Approval
Jakob-Dieffenbacher-Str. 12
75031 Eppingen, Germany
Phone: 49-7262-92 49 0
Fax: 49-7262-92 49 11 4
Email: info@shure.de



Accessories

Furnished Accessories

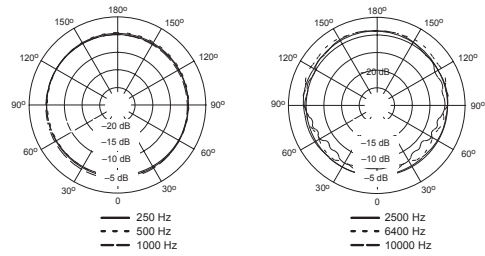
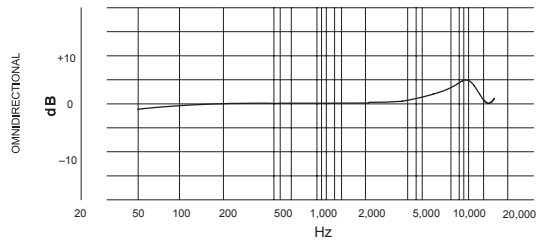
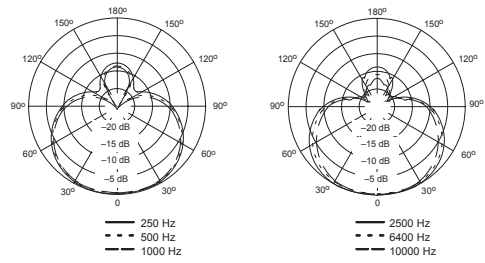
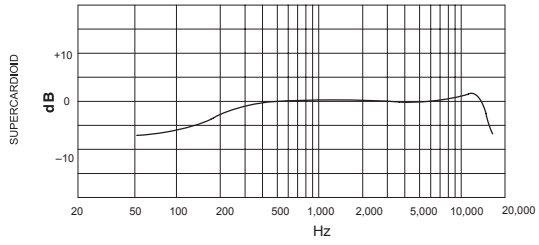
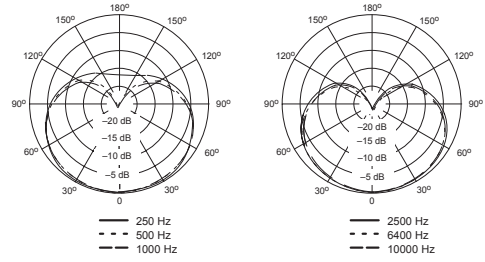
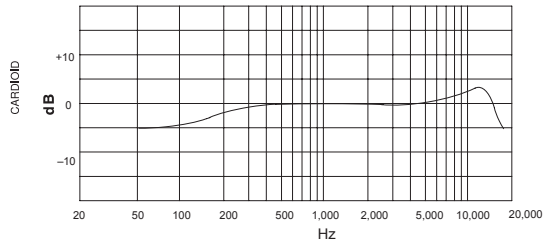
Black Snap-Fit Foam Windscreens (4) for Beta 98, Beta 98A, Beta 98/S, Beta 98D/S, Beta 98H/C, MX183, MX184, MX185, MX202, WH30, WL183, WL184 and WL185	RK183WS
White Snap-Fit Windscreen	95B2064
Preamplifier Kit, Plate Mounted, White (MX202BP and MX202WP)	RK202PK
Stand Adaptor (MX202B and MX202W)	65B1752

Optional Accessories

Small Black Desk/Table Stand for MX202 Microphones	A202BB
--	---------------

Replacement Parts

RFI Resistant, Inline Preamp for all MX Models (Black)	RK100PK
RFI Resistant, Inline Preamp for all MX Models (White)	RK100PKW
Black or White Omnidirectional Cartridge for all MX- (Microflex®) Models and WL183	R183B
White Omnidirectional Cartridge for MX- (Microflex®) Models	R183W
Black or White Supercardioid Cartridge for all MX- (Microflex®) and WL183, WL184 and WL185 Models	R184B
White Supercardioid Cartridge for MX- (Microflex®) Models	R184W
Black or White Cardioid Cartridge for WL185 and all MX- (Microflex®) Models	R185B
White Cardioid Cartridge for MX- (Microflex®) Models	R185W
Strain Relief (MX202BP and MX202WP)	80A479
Clamp (MX202B and MX202WP)	80A476
Hang Clip	80B489



SHURE[®]
LEGENDARY
PERFORMANCE™

United States, Canada,
Latin America, Caribbean:
Shure Incorporated
5800 West Touhy Avenue
Niles, IL 60714-4608 USA

Phone: +1 847-600-2000
Fax: +1 847-600-1212 (USA)
Fax: +1 847-600-6446
Email: info@shure.com
www.shure.com

Europe, Middle East, Africa:
Shure Europe GmbH
Jakob-Dieffenbacher-Str. 12,
75031 Eppingen, Germany

Phone: +49-7262-92490
Fax: +49-7262-9249114
Email: info@shure.de
www.shure.eu

Asia, Pacific:
Shure Asia Limited
22/F, 625 King's Road
North Point, Island East
Hong Kong

Phone: +852-2893-4290
Fax: +852-2893-4055
Email: info@shure.com.hk
www.shureasia.com